

# Dyslexia

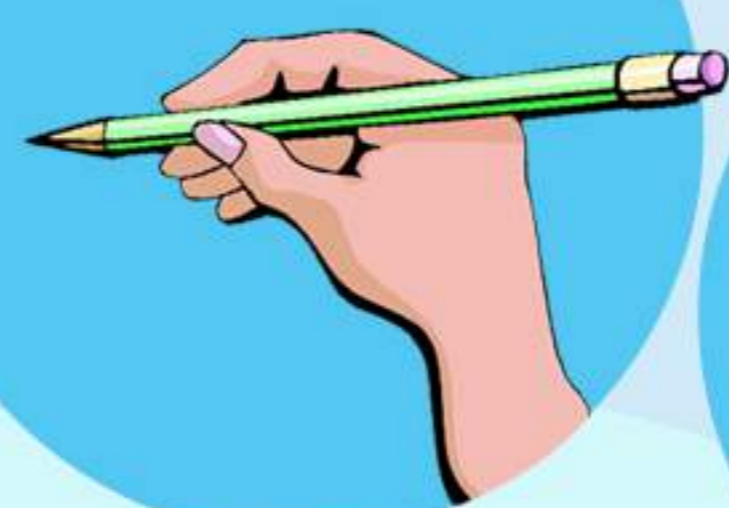
With Appropriate Support  
These Children Can Shine

## Reading



- Slow or unable to learn to read
- Difficulty decoding alphabet symbols
- Skips words and lines in text
- Misreads words
- Lacks expression when reading aloud
- Ignores punctuation marks
- Reads without comprehension
- Avoids reading aloud in public

## Spelling



- Can't remember how words look
- Difficulty hearing sounds
- Confuses letters and their sounds

## Writing



- Difficulty controlling a pen or pencil
- Slower than others to complete written tasks
- Spelling difficulties cause limited written work
- Can't organise their thoughts to write

## Speaking



- Slow to talk
- Mixes up sounds and mispronounces words
- Can't find the right word
- Difficulty with rhyming words

## Listening



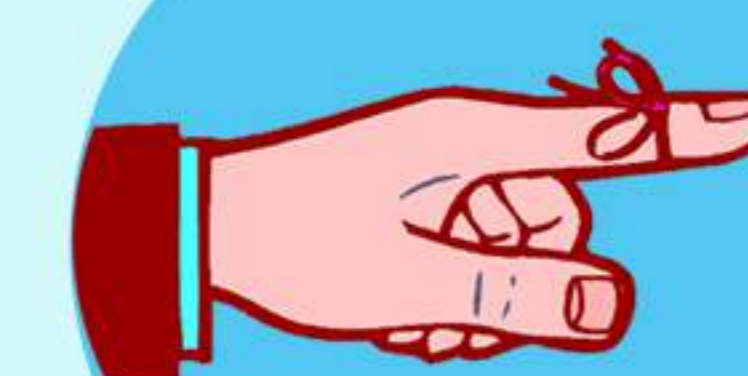
- Difficulty with multiple instructions
- Constantly asking to check their understanding
- Loses focus if people talk too long
- Finds background noise distracting

## Behaviour



- May lack self confidence
- Can act out, misbehave or withdraw
- Refuses to go to school and do homework

## Memory



- Facts and figures
- Letter combinations and words
- Times tables
- Math and Science processes
- Peoples names
- How people look

## Direction



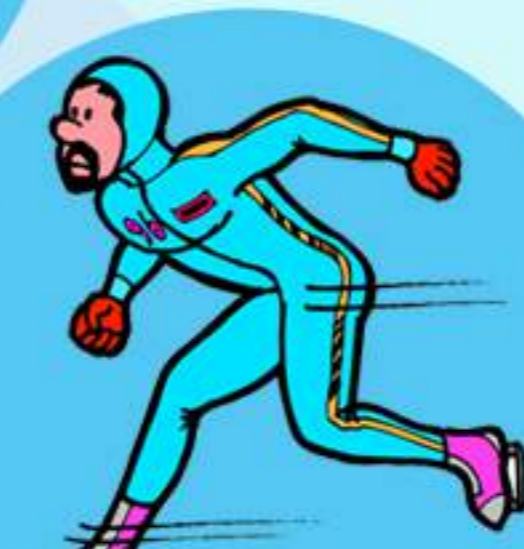
- Gets lost easily
- Confuses left and right
- Doesn't like analogue clocks

## Intelligence



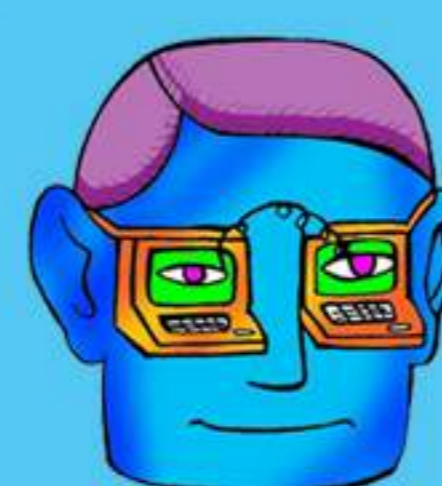
- Of average or above average intelligence
- May be highly intelligent or gifted in certain areas

## Speed



- Slower to complete reading and writing tasks
- Slower to learn systems and processes
- Requires more time to complete tests and exams

## Visual Processing



- Words misbehave on the page
- Finds black text on white paper hard to read
- Experiences eye strain and headaches
- Slow to copy notes and read accurately

## Planning



- Loses track of time
- Is too messy or really neat
- Difficulty organising work